

# Concord-Carlisle Regional High School



Neighborhood Meeting

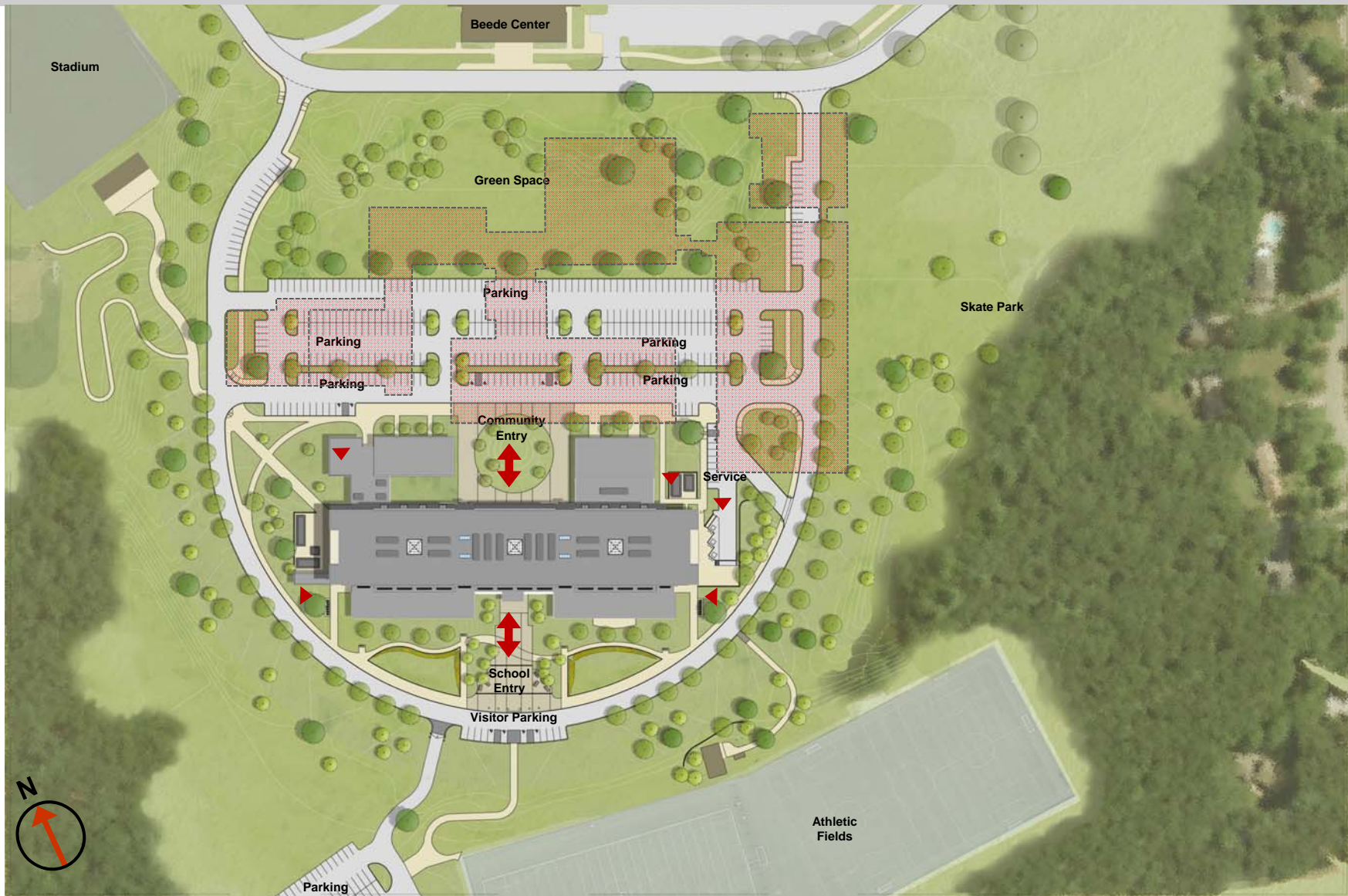
June 14, 2012

omr architects

# Ways to Stay Informed

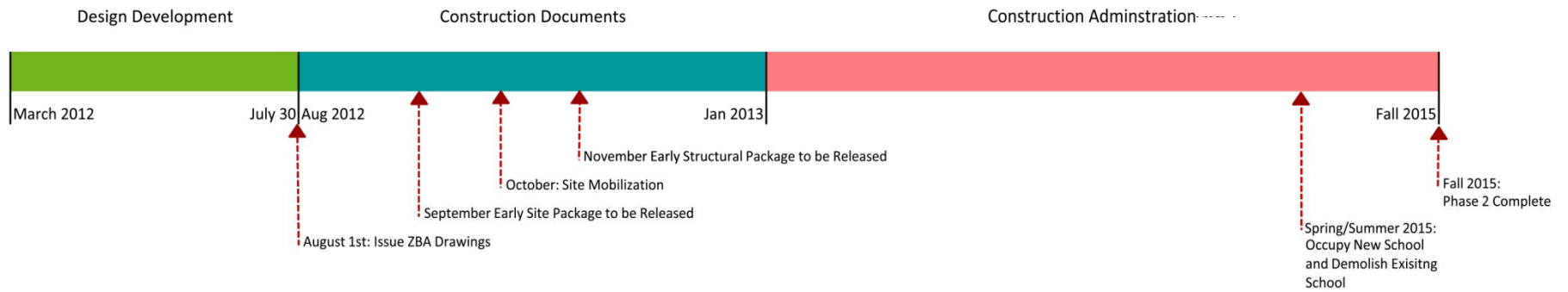
- Visit [www.cchsbuilding.org](http://www.cchsbuilding.org)
- Sign up for our newsletter (on website)
- Email: [outreach@cchsbuilding.org](mailto:outreach@cchsbuilding.org)
- Attend a Building Committee meeting (schedule on website)
- Attend our Community Forums

# Updated Site Plan

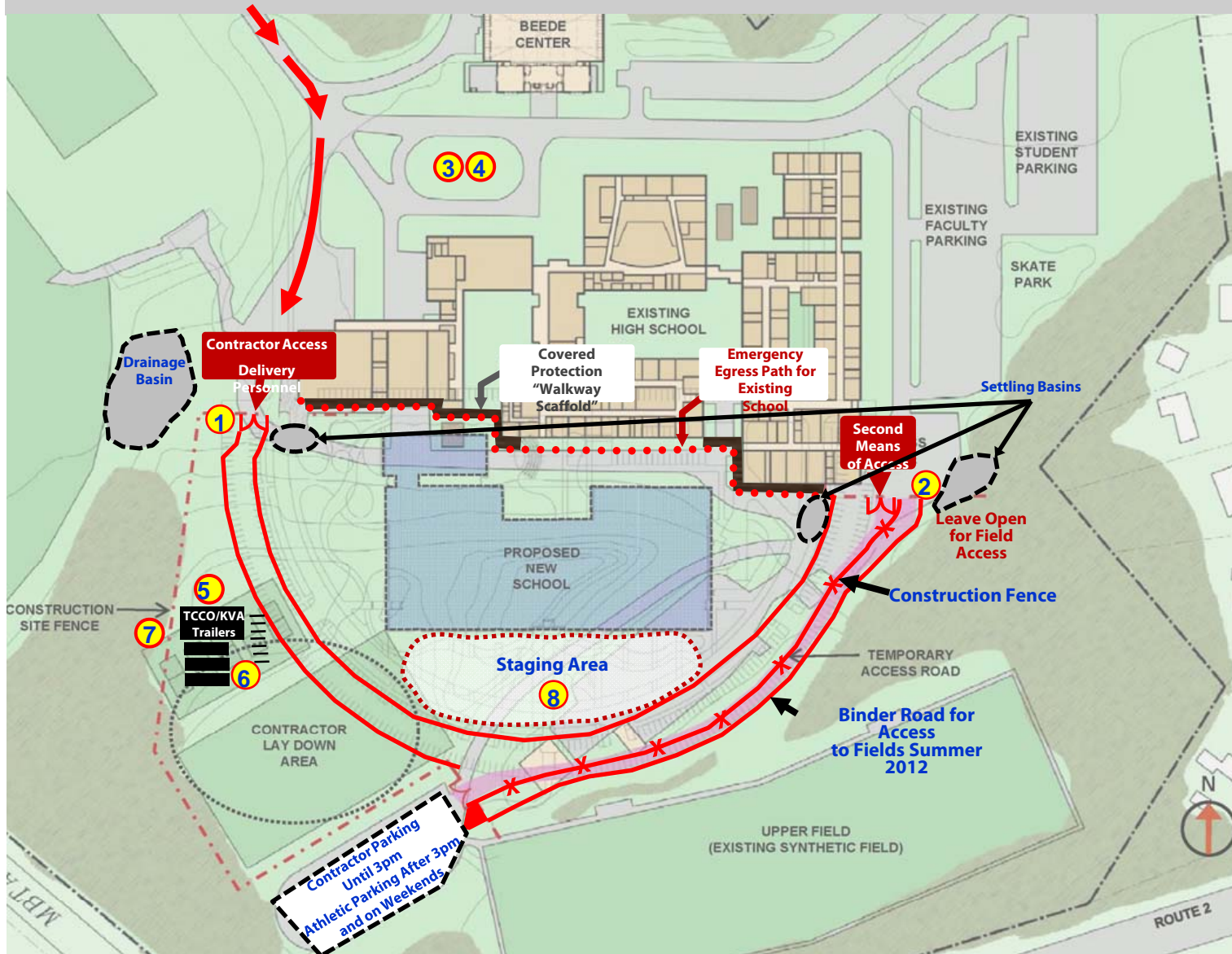


# Current Schedule

Concord Carlisle High School Timeline



# Site Construction Logistics



## EXISTING CONDITIONS & ENABLING WORK

- 1 Primary Entrance/Exit gate on controlled hour use
- 2 Allow Emergency Veh. In and out. Isolated use for concrete ops (Coordinated with school)  
Bus drop off/pickup
- 3 Parent drop off/pickup
- 4 Construction Trailers
- 5 Onsite Parking(Approx 30)
- 6 Site Fence with filter fabric
- 7 Staging Area
- 8 \* Turner would evaluate remote parking areas or on-site workers due to limited space within construction site.